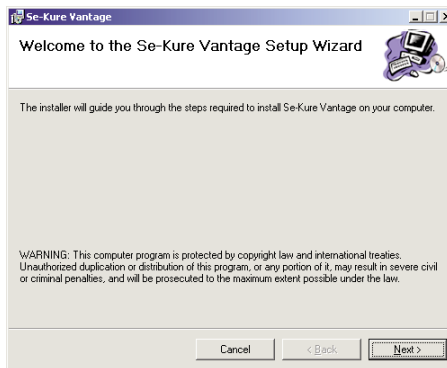




# Vantage Alarm Installing Software and Programming Instructions

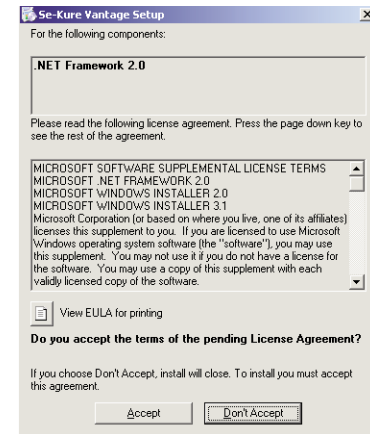
## Software Installation Instructions: Installing the Software on Your PC:

1. Shut down all programs currently running on your PC.
2. Put the CD into the CD/DVD drive of your PC.
3. The CD has an Autorun feature that will bring you directly to a Windows Installer License Agreement. If the Autorun does not start, you will need to Select [start] from the windows desktop and run... In the Run window Enter: **d:\setup** in the Open: dialog box. Substitute d: for the letter of you CD drive.
4. You will need to select the [Accept] button to continue and begin copying the required files as shown in **Screen 1**.
5. If your PC **Has Not Received a Recent Windows Update**: the software will begin installing the .NET Framework 2.0 automatically as shown in **Screen 2**.
6. The Welcome Screen will appear, and you will need to select [Next] to continue as shown in **Screen 3**.

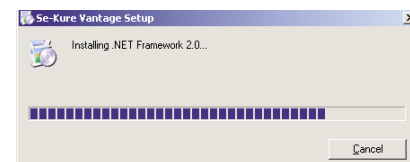


Screen 3

7. The Software License Agreement will now appear. You will need to read the Agreement and select • I Agree and [Next] to continue as shown in **Screen 4**.
8. The Select Installation Folder Screen will appear. (Only advanced installers should change the folder location). Then make the selection of who you want to access the software on this PC • Everyone or • Just me (this determines the profile(s) on this computer that the software will be available to. You must select [Next] to continue as shown in **Screen 5**.



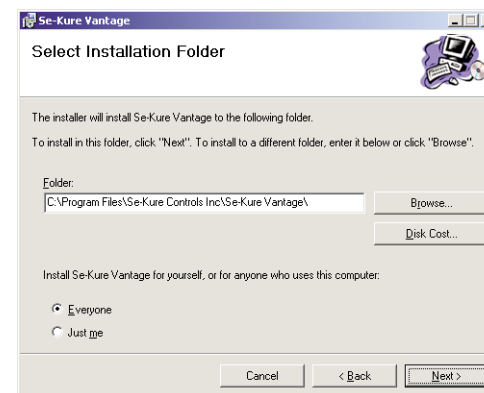
Screen 1



Screen 2



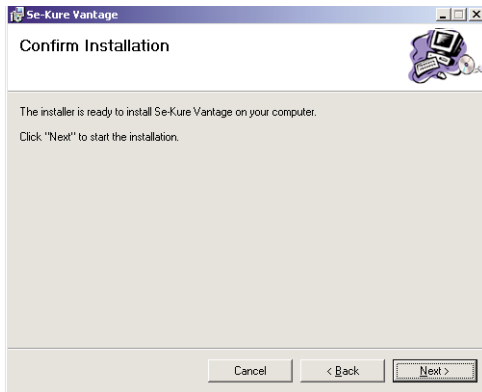
Screen 4



Screen 5

# Software Installation Instructions

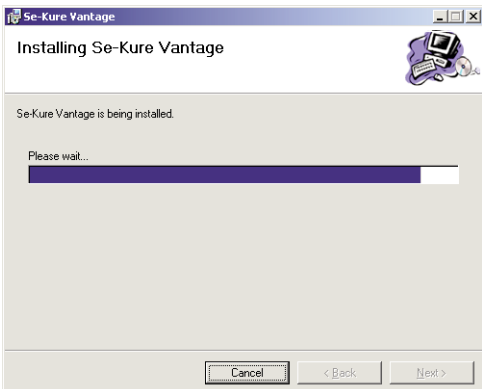
## Installing the Software on Your PC: (con't)



Screen 6

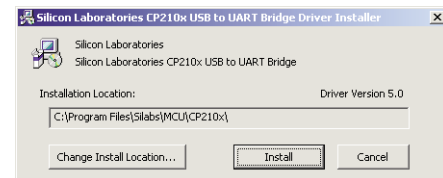
9. Now the Confirm Installation Screen comes up. You must select [Next] to continue as shown in **Screen 6**.

10. The Installing Se-Kure Vantage Screen will appear to show you the progress of the installation as shown in **Screen 7**.



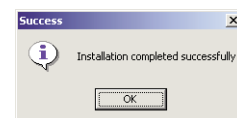
Screen 7

11. The Silicon Laboratories Screen will appear and ask you if it is ok to install their driver to a folder location. (Only advanced installers should change this location). You must select [Install] to continue as shown in **Screen 8**.



Screen 8

12. A small Success Screen will appear as shown in **Screen 9**. You must select [OK] to continue.

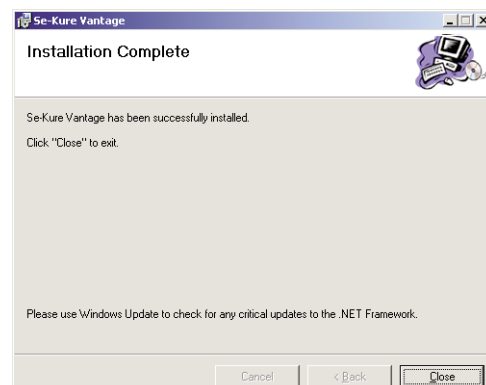


Screen 9

13. Congratulations, the Installation Complete Screen finally shows up as shown in **Screen 10**. Please select [Close] to end the installation.

14. To Create a Desktop Shortcut: Select [start] from the Windows Desktop... then **All Programs** > mouse over to >[**Se-Kure Controls Inc**] and continue to mouse over to >[**Se-Kure Vantage**]

15. Hold the Right Mouse Button Down on [**Se-Kure Vantage**] and drag it over to the desktop. When you release the mouse on the desktop you will get a small screen...select **copy here**.



Screen 10

## Programming Instructions: Programming Buttons:

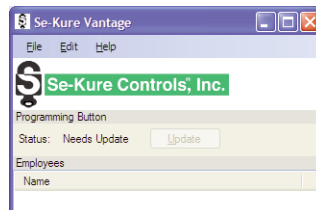
16. Plug the Programming Adapter into the USB Drive of the PC that has the Vantage Programming Software installed.
17. The first time the Adapter is plugged into your PC it will indicate that it has found new hardware, install the driver for it (it was loaded along with the software), and finally tell you that the device is ready to use.
18. Start the Se-Kure Vantage software by either the shortcut you created on the desktop or Select [**start**] from the Windows Desktop... then All Programs > and mouse over to >[**Se- Kure Controls Inc**] and continue to mouse over to >[**Se-Kure Vantage**]
19. The Se-Kure Vantage Programming Screen will appear and ask you to "Please insert a Programming Button" as shown in **Program Screen 1**.

Program Screen 1



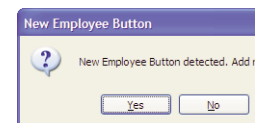
20. Place the [RED] Managers Button in the Programming Adapter. Screen 1 will go away, and be replaced by the Programming Button Screen shown here as **Program Screen 2**.

Program Screen 2



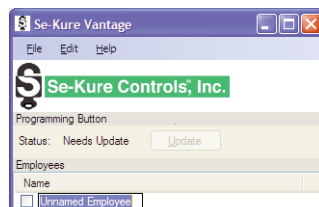
21. Put a [GREEN] Employee Button in the Programming Adapter and the screen will be changed to the "New Employee Button" Screen as shown in **Program Screen 3**.

Program Screen 3



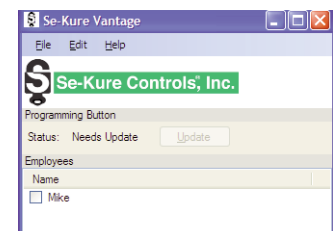
22. Select the [Yes] Button and the "Employees" Screen will appear as shown in **Program Screen 4**. Type in the name of the employee who will use that button in the highlighted space.

Program Screen 4



23. After you have Typed in the employee name, press [enter] on your keyboard for the program will accept that name for that button as shown in **Program Screen 5**. (It is a good idea to mark or label the buttons so you can identify them later).

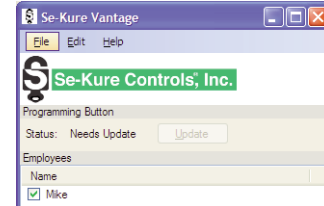
Program Screen 5



## Programming Instructions: Programming Buttons:

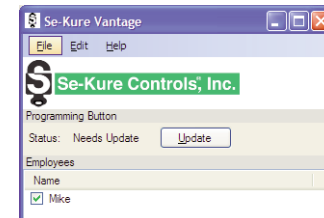
24. "Click" the mouse in the  square at the left of the employee name, and a  check mark will show up in the square as shown in **Program Screen 6**. The  check mark gives that employee permission to use their button to Activate and De-activate the Vantage Stand.

Program Screen 6



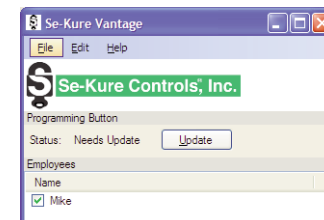
25. Place and hold the [RED] Manager Button in the Programming Adapter, and the [Update] button will no longer be grayed out as shown in **Program Screen 7**. With the Manager still in the Adapter, "click" the [Update] button.

Program Screen 7



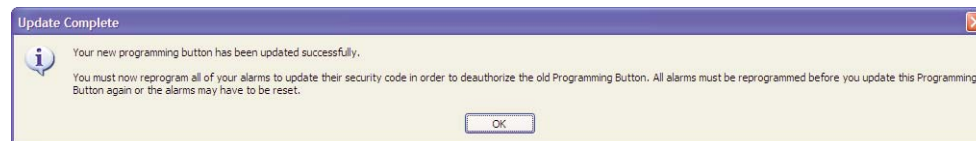
26. You must [Update] the RED Managers Button twice the very first time you use the software... Place and hold the [RED] Manager Button in the Programming Adapter, and the [Update] button will no longer be grayed out as shown in **Program Screen 7**. With the Manager still in the Adapter, "click" the [Update] button.

Program Screen 7



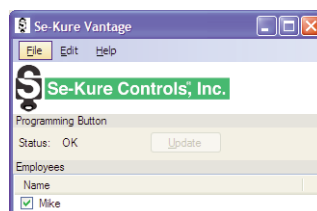
27. A green status bar will go by showing you the progress (not shown), and then the Update Complete window appear as shown in **Program Screen 8**.

Program Screen 8



28. "Click" the [OK] button and you will be brought back to the Programming Button window as shown in **Program Screen 9**. This time you will notice that it indicates Status: **OK**.

Program Screen 9



## Programming the Stand:

- 29.** Put the RED Programming Button in the Programming Dock of the stand and HOLD (it is the round concave area on the front of the base cone). When the GREEN LED light is lit solid, you can take the button away. The Horn will "chirp" and the LED will light (3) times. This indicates the Alarm is Programmed and is Armed



- 30.** Use the Alcohol Prep Pads to clean the back of a Cell Phone or Small Electronic item that is going on the stand. While the alcohol is still wet, wipe this area dry with a clean paper towel or rag. If the towel shows dirt, repeat this cleaning step until the area is clean and dry.



- 31.** Disarm the Alarm with the GREEN Employee Button. The RED LED will not blink and the horn will not chirp at this time.



- 32.** Remove the adhesive backing from the sensor on top of the stand, and align the display item with the sensor so it stands straight when recoiled back onto the stand. Press this item on firmly to insure a good bond.

At this time the RED LED will blink and the horn will chirp once every 30 seconds, Now you can use the GREEN Employee Button to arm the alarm, or wait for 2 minutes for the alarm to rearm itself.



## Arming & Disarming with the GREEN Employee Button:

**DISARM:** Place the GREEN Employee Button in the Programming Dock  
(It will Beep & Flash (1) time to indicate that it is disarmed.)

**ARM:** Place the GREEN Employee Button in the Programming Dock  
(It will Beep & Flash (2) times to indicate that it is armed.)

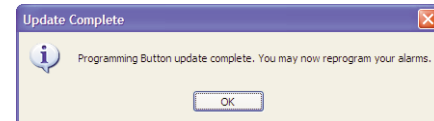
The GREEN Employee Button toggles between Arming & Disarming. If it is armed, placing the button in the dock disarms it. If it is disarmed, placing the button in the dock arms it.

When the Alarm has been disarmed with a GREEN Employee Button, the RED LED will flash and the horn will chirp if a product is attached to the sensor. If no product is attached to the sensor, then the RED LED will NOT flash and the horn will NOT chirp.

## Re-Programming Instructions

### Programming Additional Buttons & Re-Programming Buttons:

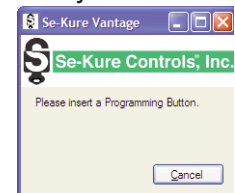
1. **Removing a User:** On the Programming Button Screen you can uncheck any employee so that employee button no longer functions. After un-checking the box, the [Update] button will no longer be grayed out. Place the [RED] Manager Button in the Adapter and hold while you "click" the [Update] button. A green status bar will go by showing you the progress (not shown), and then the Update Complete window appear as shown in **Program Screen 10**. Put the RED Programming Button in the Programming Dock of the stand and HOLD (it is the round concave area on the front of the base cone). When the GREEN LED light is lit solid, you can take the button away. The Horn will "chirp" and the LED will light (3) times.



Program Screen 10

2. **Adding a New Employee Button:** Repeat Steps 18 through 28. This will add additional employees in the list.

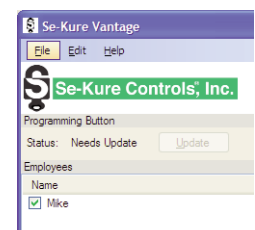
3. **Re-Programming a Button:** Start the Se-Kure Vantage software by either the shortcut you created on the desktop or Select [start] from the Windows Desktop... then **All Programs** > and mouse over to >[Se-Kure Controls Inc] and continue to mouse over to >[Se-Kure Vantage]



Program Screen 1

4. The Se-Kure Vantage Programming Screen will appear and ask you to "Please insert a Programming Button" as shown in **Program Screen 1**.

5. Place the [RED] Managers Button in the Programming Adapter. Screen 1 will go away, and be replaced by the Programming Button Screen shown here as **Program Screen 6**.



Program Screen 6

6. To change the user of that button you can right click the name and choose [edit employee name]. (You are only changing the name on the screen and do not need to reprogram the managers button).



**Se-Kure Controls, Inc.**

3714 Runge Street • Franklin Park, IL 60131 • 1-(800) 322-2435 • (847) 288-1111 • Fax: (847) 288-9999

Rev. 03/03/08 SCI-9892 ©2007 Se-Kure Controls, Inc.